

Specialised Handling, Cutting & Fixing Panels



Large Format Panel Cutters



Panel Handling Equipment



Mechanical Fixing



RLS - Raimondi Levelling System



MCA & MCG Tiling Trims



RAI-FREECUT150

Raimondi Free-Cut Starter Kit 1500mm

- For Cutting Large Tiles / Panels
- Complete Kit Includes:
- 1 x 1500mm Guide Rail
- 1 x Separating Pliers (up to 6mm Thick)
- 1 x Guide Set Including Carry Case

RAI-FREECUT-EB

Raimondi Free-Cut Extension Bar 1500mm

- Connect to RAI-FREECUT150 to Allow a Total Cutting Length of 3200mm

RAI-FREECUTFG

Raimondi Free-Cut Fixing Guides

- Used to Secure Free-Cut to a Bench
- Max Cutting Width 3200mm
- Minimum Tile Depth For Clamping 200mm
- Maximum Tile Thickness 6mm



RAI-FREECUTPK90

Raimondi Free-Cut Powered Unit 90°

- Angle Grinder 850 Watt
- 125mm Blade Capacity
- Supplied With RAI-DDCCT125 Turbo Blade



RAI-FREECUTPK45

Raimondi Free-Cut Powered Unit 45°

- Angle Grinder 850 Watt
- 125mm Blade Capacity
- Supplied With RAI-DDCCT125 Turbo Blade

RAI-FREECLOSER**Raimondi Free-Cut Closer**

- Suction Cup Device to Adjust Grout Lines
- Use With RLS for Best Results

**RAI-FREECUTMK****Raimondi Free-Cut Manual Kit**

- Contains: 2 x Rail End Guides, 1 x Scribing Mechanism & 1 x Small Pliers

**RAI-FREECUTSMP****Raimondi Free-Cut Small Pliers**

- For Use on Tiles/Panels from 3mm to 6mm Thick

**RAI-FREECUTLGP****Raimondi Free-Cut Large Pliers**

- For Use on Tiles/Panels from 6mm to 12mm

**RAI-FREEMOVE****Raimondi Free-Move 1500**

- Complete Transport System for Panels up to 1500 x 1500 x 6mm
- Usable With or Without the Wheeled Trolley / Support Stand

**RAI-FREEMOVE3****Raimondi Free-Move 3000
(2 x RAI-FREEMOVE)**

- Complete Transport System for Panels up to 3200 x 1500 x 6mm
- Usable With or Without the Wheeled Trolley / Support Stand



RAI-EASYMOVE

Raimondi Easy-Move 1500

- Carry System for Panels up to 1500 x 1500 x 3mm



RAI-EASYMOVE-EX

Raimondi Easy-Move Extension 1500

- To Be Used in Addition to the RAI-EASYMOVE



RAI-EASYMOVE3

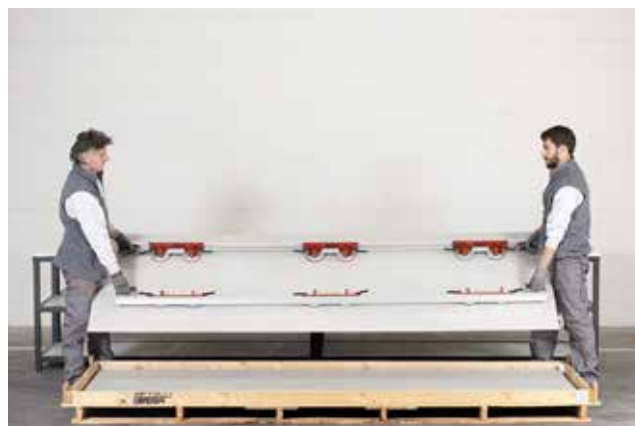
Raimondi Easy-Move 3000

- Carry System for Panels up to 3200 x 1500 x 3mm

(1 x RAI-EASYMOVE & 1 x RAI-EASYMOVE-EX)



3



RAI-BM180

Raimondi Modular Bench

- 1800mm x 900mm Worktop
- 830mm Height
- 31 Kg Weight
- Easily Assembled
- Easily Transportable
- Adjustable Rubber Feet
- Adjustable Position of Selected Bench Rails
- Supplied With Joiner Piece to Allow Connecting Multiple Modular Benches



Disassembled



Connected: 2 x RAI-BM180

Joiners

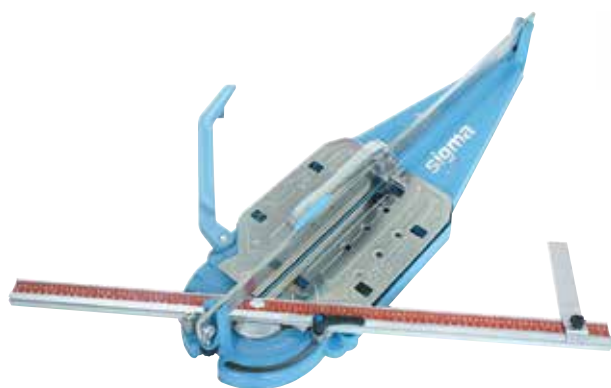


Adjustable Bench Rail Positions



Quick Clamp Legs





SIG-3DM

Sigma 3D "Max" Tile Cutter

- 900mm Cutting Length
- 630 x 630mm Diagonal
- Max 20mm Tile Thickness
- Scoring Wheel - SIG-14MX

SIG-39N
Chrome Guide Bar

SIG-90LD
Swivelling Calibrated
Arm

SIG-20A
Guide Bar Ends

SIG-19D
Sliding Square

SIG-108621
Clamping Knob

SIG-1079104
Clamping Knob
Nut

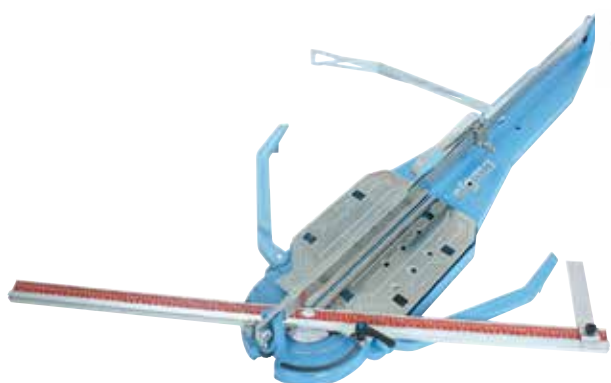
SIG-24M10
Complete
Handle

SIG-104064
Support Arm
Left

SIG-104065
Support Arm
Right
(Optional)



Non-Marking Nylon Foot:
SIG-104058



SIG-3EM

Sigma 3E "Max" Tile Cutter

- 1280mm Cutting Length
- 900 x 900mm Diagonal
- Max 20mm Tile Thickness
- Scoring Wheel - SIG-14MX

SIG-39P
Chrome Guide Bar

SIG-90LE
Swivelling
Calibrated Arm

SIG-20A
Guide Bar
Ends

SIG-19D
Sliding
Square

SIG-108621
Clamping
Knob

SIG-1079104
Clamping
Knob Nut

SIG-24M15
Complete
Handle

SIG-104064
Support Arm
Left

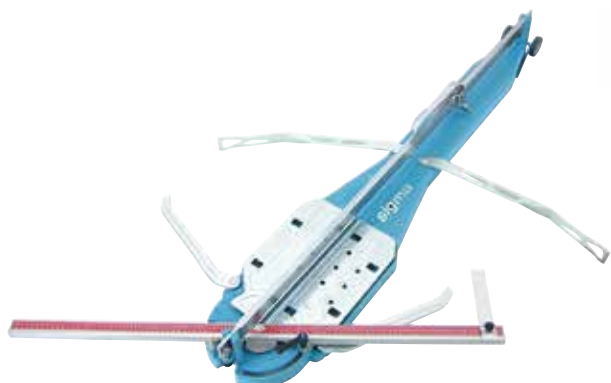
SIG-104065
Support Arm
Right

SIG-1079119
Support Arm
XL Left

SIG-283
Support Arm
XL Right
(Optional)



Non-Marking Nylon Foot:
SIG-104058



SIG-3FM

Sigma 3F "Max" Tile Cutter

- 1510mm Cutting Length
- 1060 x 1060mm Diagonal
- Max 20mm Tile Thickness
- Scoring Wheel - SIG-14MX

SIG-39Q
Chrome Guide Bar

SIG-90LE
Swivelling
Calibrated Arm

SIG-20A
Guide Bar
Ends

SIG-19D
Sliding
Square

SIG-108621
Clamping
Knob

SIG-1079104
Clamping
Knob Nut

SIG-24M20
Complete
Handle

SIG-104064
Support Arm
Left

SIG-104065
Support Arm
Right

SIG-1079119
Support Arm
XL Left

SIG-283
Support Arm
XL Right



Non-Marking Nylon Foot:
SIG-104058

Note: Other Parts And Accessories Are Available On Request

RAI-RAICUT

Raimondi Grooving Tool

- Specialised Tool for RAI-FIX System
- 900 Watt Motor
- Supplied With RAI-DBCCT125

- Vacuum Attachment
- Adjustable Depth Stop
- Vacuum Attachment



RAI-RFH(Size)

Raimondi RAI-FIX Hook

- Small - Minimum 6mm Tile Thickness
- Medium - Minimum 8mm Tile Thickness

- Stainless Steel
- 6mm & 8mm Anchor Holes
- Recommended Usage:

Tile	Hooks
600 x 600	1
900 x 900	2
1200 x 1200	3



Raimondi RAI-FIX is a Mechanical Fixing System for Wall Installation of Tiles and Slabs.

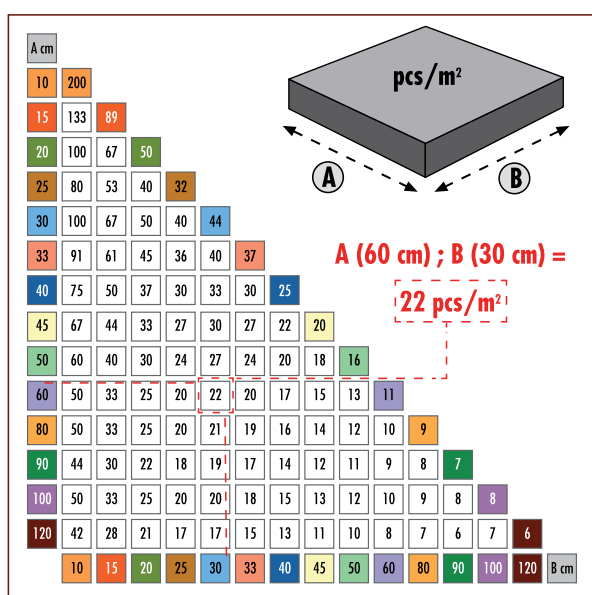
To be Used in Addition to the Recommended Adhesive System. (Not as a Replacement for Correct Adhesive use)



Please Note:
Only Suitable For
Use On Materials
Greater Than
6mm Thick

Code	Description
RAI-RAICUT	Raimondi RAI-CUT Complete Grooving Tool
RAI-RFH6120	Raimondi RAI-FIX Hook - For Tiles > 6mm - 120 pcs
RAI-RFH6500	Raimondi RAI-FIX Hook - For Tiles > 6mm - 500 pcs
RAI-RFH870	Raimondi RAI-FIX Hook - For Tiles > 8mm - 70 pcs
RAI-RFH8120	Raimondi RAI-FIX Hook - For Tiles > 8mm - 120 pcs
RAI-RFH8500	Raimondi RAI-FIX Hook - For Tiles > 8mm - 500 pcs
RAI-DBCCT125	Raimondi Diamond Blade - Turbo Rim - 125mm (Not Shown)





RAI-LSK

Raimondi Levelling System Starter Kit

- 1 x RAI-LSATPF
- 1 x RAI-LSBC100 (Base Clips)
- 1 x RAI-LSW100 (Wedges)

RAI-LSATPF

RLS Adjustable Traction Pliers - Floor

RAI-LSATPW

RLS Adjustable Traction Pliers - Wall

RAI-LSATPC

RLS Replacement Protective Cap

- For Adjustable Traction Pliers - Both Wall & Floor Pliers



RAI-LSBC(Size)

RLS Base Clips

- Minimum Joint Width 1.5mm
- Small Clips - Tile Thickness 3 - 12mm
- Various Quantities Available



RAI-LSBCL(Size)

RLS Base Clips - Large

- Minimum Joint Width 1.5mm
- Large Clips - Tile Thickness 12 - 20mm
- Various Quantities Available



RAI-LSW(Size)

RLS Wedges

- Used For Small, Large & 3D Base Clips
- Reusable
- Various Quantities Available



RAI-3DLSBC(Size)

RLS Base Clips - 3D

- Minimum Joint Width 1.5mm
- Tile Thickness 3 - 12mm
- Various Quantities Available



Code	Description
RAI-LSBC100	Raimondi Levelling System Base Clips - Small (3-12mm) - 100 pcs
RAI-LSBC250	Raimondi Levelling System Base Clips - Small (3-12mm) - 250 pcs
RAI-LSBC500	Raimondi Levelling System Base Clips - Small (3-12mm) - 500 pcs
RAI-LSBC2000	Raimondi Levelling System Base Clips - Small (3-12mm) - 2,000 pcs
RAI-LSBCL200	Raimondi Levelling System Base Clips - Large (12-20mm) - 200 pcs
RAI-LSBCL400	Raimondi Levelling System Base Clips - Large (12-20mm) - 400 pcs
RAI-LSBCL1500	Raimondi Levelling System Base Clips - Large (12-20mm) - 1,500 pcs
RAI-LSW100	Raimondi Levelling System Wedges - 100 pcs
RAI-LSW250	Raimondi Levelling System Wedges - 250 pcs
RAI-LSW500	Raimondi Levelling System Wedges - 500 pcs
RAI-LSW1000	Raimondi Levelling System Wedges - 1,000 pcs
RAI-3DLSBC100	Raimondi 3D Levelling System Base Clips - (3-12mm) - 100 pcs
RAI-3DLSBC250	Raimondi 3D Levelling System Base Clips - (3-12mm) - 250 pcs
RAI-3DLSBC500	Raimondi 3D Levelling System Base Clips - (3-12mm) - 500 pcs
RAI-3DLSBC3000	Raimondi 3D Levelling System Base Clips - (3-12mm) - 3,000 pcs

BATSC-4

BAT Suction Cup

- 100mm Diameter
- Up to 40Kg Capacity



BATSC-D4

BAT Dual Suction Cup

- 100mm Diameter
- Up to 80Kg Capacity



BAT-UDG683

BAT Universal Drilling Guide

- 6mm to 83mm



RAI-MEDSC

Raimondi Medusa Suction Cup

- 115mm Diameter
- Up to 40Kg Capacity



RAI-SCD45

Raimondi Dual Suction Cup

- 115mm Diameter
- Up to 90Kg Capacity



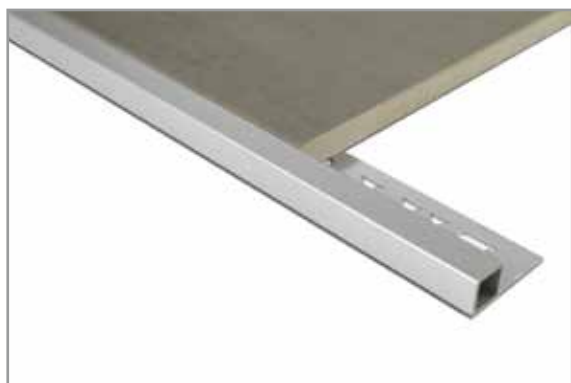
BAT-ZPSH

BAT Suction Cup Hook

- Zinc Plated
- 38mm Diameter
- Up to 6Kg Capacity



We Have
Many Other
Tools & Trims
That Are Also
Suitable For Use
On Large Panels



MCA-(Size)-3-MF

Mosaic Corner Angle - Aluminium

- Mill Finish
- 3m Length

MCA-(Size)-3-(Colour)

Mosaic Corner Angle - Aluminium

- Standard Colours Available (Refer Guide Below)
- 3m Length



MCG-(Size)-3-MF

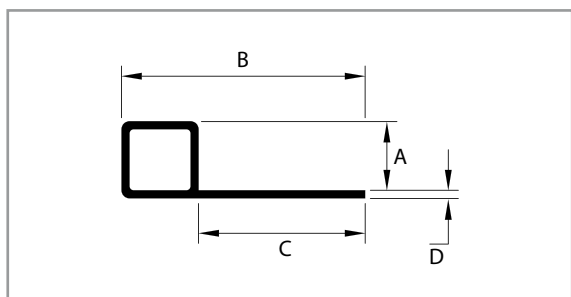
Mosaic Corner Guard - Aluminium

- Mill Finish
- 3m Length

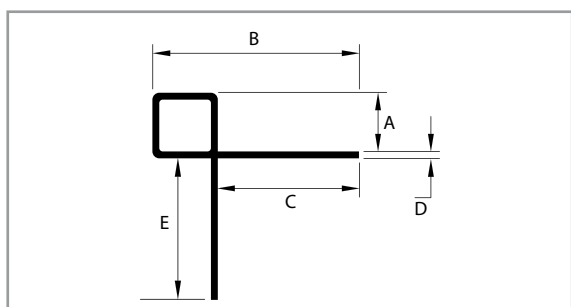
MCG-(Size)-3-(Colour)

Mosaic Corner Guard - Aluminium

- Standard Colours Available (Refer Guide Below)
- 3m Length



(Size)	A (mm)	B (mm)	C (mm)	D (mm)
4	4.50	25.50	20.00	1.00
6	6.50	27.50	20.00	1.00
8	8.50	30.00	20.50	1.00
10	10.50	32.00	20.50	1.00
12	12.50	34.00	20.50	1.00
15	15.00	36.00	21.00	1.00



(Size)	A (mm)	B (mm)	C (mm)	D (mm)	E (mm)
4	4.50	25.50	20.00	1.00	20.00
6	6.50	27.50	20.00	1.00	20.00
8	8.50	30.00	20.50	1.00	20.50
10	10.50	32.00	20.50	1.00	20.50
12	12.50	34.00	20.50	1.00	20.50
15	15.00	36.00	20.00	1.00	20.00



Corners

Available for:
8, 10 & 12mm
In Selected Colours

Custom

Other Anodised
and Powdercoated
colours are also
available and
quoted on request.

(Colour)

Mill Finish

MF - Mill Finish

Anodised

BS - Bright Silver

MS - Matt Silver

Powdercoated

ALA - Alabaster

BK - Gloss Black

WH - Pearl White

PLEASE NOTE: Care must be taken during and after installation of surface finished trims. Refer to pages 4 & 5 of the main catalogue.

B.A.T. TRIMS PTY. LTD.

email: sales@battrims.com
website: www.battrims.com
Melbourne: 03 9797 7900

Brisbane: 07 3260 5222
Sydney: 02 9721 2275
Perth: 08 9303 9827
Adelaide: 08 8345 1248
Albury: 02 6025 1855
Townsville: 07 4775 6956